

BARTON CHRISTMAS FESTIVAL 2023 p12-13

Baysgarth Park Parkrun



PANTO SEASON
page 4



BARTON VOLUNTEERS
page 9

WHAT'S ON
pages 10-11



PUBS REINVENTED
pages 14-15

BARTON Buy Local

What you can't find here, you don't need!



After several years of planning and development by members of Barton and District Athletics Club and enthusiastic volunteers the first official parkrun took place at 9am on Saturday, September 30.

Although this soft launch was supposed to be a quiet low-key test event the group reported that 80 parkrunners walked, jogged or ran the all tarmac paths within the stunning park setting of Baysgarth Park.

Baysgarth Park Parkrun organisers would like to extend their thanks to the following for supporting the setup and activation of this event: Barton Town Council, Keigar Homes, Euronics - Barton, RNS Chartered Accountants, Mark Nettleton Home and Garden Services, Barton & District AC - Road Runners and the 15 fabulous volunteers who made it happen on the day!



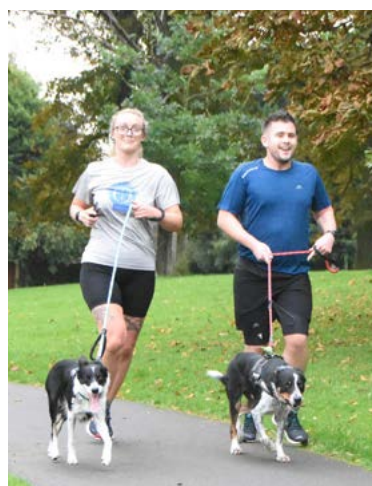
The following Saturday the number more than doubled with 210 people crossing the finish line. Many runners are new to parkrun and are taking the opportunity of a local run being established to add it to their Saturday morning routine. After just five events 686 people have crossed the finish line with many travelling a distance to tick off this new addition to the parkrun list.

The visitors' board at the start of each session shows runners attending from all over the country with Cornwall being the furthest so far.



If you would like to get involved as a runner or as a volunteer please get in touch through the Baysgarth Park parkrun facebook page or email baysgarthpark@parkrun.com

Alternatively pop up to the Park at 9am on a Saturday to cheer on the participants, they will appreciate it.



Runners' Rewards

When Barton Tourism Partnership members saw the numbers of people attending the newly established Baysgarth Park parkrun a plan was quickly hatched to capitalise on these additional visitors to the town.

Leaflets were handed out at the second event which coincided with the monthly Barton Market which encouraged runners to visit after the run.

It certainly worked with one of the busiest markets to date. Leafleting has now been replaced with a more environmentally friendly QR code linking to Barton food businesses that are offering discounts to runners.



The Singing Kettle displaying their Runners Reward window sticker.

The new Runners' Rewards were launched by Barton Tourism Partnership chair Cllr Paul Vickers at the October 28 event.



Cllr Paul Vickers Chair of the Barton Tourism Partnership launches the Runners Reward Scheme



Barton Upon Humber Town Council Members

If you think that they can help you with anything then please contact one of your Town Councillors: All email addresses are cllrname@bartonuponhumbertowncouncil.gov.uk

L Bennet [I]	19 Queen Street	Tel: 07792-775101
cllrlizbennet@bartonuponhumbertowncouncil.gov.uk		
A.L. Chapman [C]	29 Lower Meadows	Tel: 07900-517424
cllralvinchapman@bartonuponhumbertowncouncil.gov.uk		
J Evison [C]	The Assembly Rooms	Tel: 01652-633598
cllrjonathanevison@bartonuponhumbertowncouncil.gov.uk		
N Jacques [G]	15 Queen Street	Tel: 01652-632438
cllrneiljackson@bartonuponhumbertowncouncil.gov.uk		
C Patterson [C]	2 Beck Hill	Tel: 07511-674821
cllrchristinepatterson@bartonuponhumbertowncouncil.gov.uk		
N Pinchbeck [I]	10 Lower Meadows	Tel: 01652-633811
cllrniel pinchbeck@bartonuponhumbertowncouncil.gov.uk		
C Thornton [G]	27 Butts Road	Tel: 01652-634142
cllrcarolthornton@bartonuponhumbertowncouncil.gov.uk		
B Troop [I]	127 Tofts Road	Tel: 07894-855449
cllrbentroop@bartonuponhumbertowncouncil.gov.uk		
N Turner [L]	3 Caistor Road	Tel: 01652 633598
cllrneilturner@bartonuponhumbertowncouncil.gov.uk		
P Vickers [C]	16 Plumleaf Way	Tel: 01652-661068
cllrpaulvickers@bartonuponhumbertowncouncil.gov.uk		
K Vickers [C]	Horkstow Road	Tel: 01652-633951
cllrkeithvickers@bartonuponhumbertowncouncil.gov.uk		
A Watson [G]	1 Chapel Lane, Horkstow	Tel: 01652 633598
cllramiewatson@bartonuponhumbertowncouncil.gov.uk		

C = Conservative. G = Green. I = Independent. L = Labour.

Members serving on North Lincolnshire Council
Cllrs C Patterson, P Vickers, K Vickers.

You can also write to the Town Clerk at:

Council Office, Assembly Rooms, Queen Street, Barton-upon-Humber, DN18 5QP
Tel. 01652 633598 Email info@bartonuponhumbertowncouncil.gov.uk
Website www.bartontowncouncil.org.uk

Barton Upon Humber Town Council Office opening hours

Barton Upon Humber Town Council office endeavours to open Monday to Friday 9am to 3pm. However if the office is closed, the Council staff can be contacted via telephone or by email. Telephone. 01652 633598 or 07983154787/ Email. info@bartonuponhumbertowncouncil.gov.uk

Please keep up to date with meetings, town information, events and activities via our Town Council Website page: www.bartontowncouncil.org.uk and Facebook page www.facebook.com/BartonTownCouncil

Town Council Meetings

All meetings are held within the Assembly Rooms on Queen Street. Members of the public are welcome at all meetings and the council welcomes attendance. There are many different meetings covering a wide range of council services and projects. There is a designated time prior to the meeting commencing for members of the public to be able to address the councillors and the opportunity is there to remain at the meeting and listen to the councillors' debate and decisions.

Barton Upon Humber Town Council Forthcoming meeting dates

November 2023		
F&GP Planning	Monday 6th November	6pm
	Monday 20th November	6pm
December 2023		
Full Council Planning	Wednesday 6th December	7pm
	Monday 11th December	6pm
January 2024		
Full Council Planning	Wednesday 3rd January	7pm
	Monday 29th January	6pm

Creating the Bartonian	Feedback and Comments
Articles and information are submitted by the public. Barton Bygones: created by David Lee Photography. Editorial team: Neil King, Liz Bennet and Jane Tuplin Page 2: Tracey Davis Barton Town Clerk, Advertising: Carol Clark Deputy Town Clerk Distribution co-ordination: Cllr Neil Jacques Design: Lee Collins of CD Design Printed by: Sharmans Ltd	Feedback and comments about this edition of The Bartonian or ideas and articles for future publications can be posted to Barton Town Council at The Assembly Rooms, Queen Street, Barton upon Humber DN18 5QP or emailed to: deputyclerk@bartonuponhumbertowncouncil.gov.uk

Disclaimer: All information was correct at the time of going to print 3 November 2023. The Deadline for the January issue of the Bartonian is 5pm Thursday 21 December 2023.

Town Council Updates

Neighbourhood Plan

The first formal consultation of the Draft Neighbourhood Plan has taken place and the Steering Group would like to thank all who have contributed to the consultation by way of comments, attendance at events and volunteering to help with the consultation. Once feedback is received from North Lincolnshire Council and other statutory consultees the group will examine the information and amend accordingly. There will still be a further formal consultation once the amendments have been made and this is hoped to be early in the New Year.

Assembly Rooms

Following the success of the UK Shared Prosperity Bid for £5,000 and match funding from the Town Council of £5,000 a Feasibility Study will be undertaken. Quotations are being received and a consultant will be selected in the next few weeks. This study will go on until around February 2024

Up The Pole Planters

Specifications have been drawn up with thanks to the professional gardeners for their help and expert advice. It is hoped that the units will be filled with a display of sustainable plants that are great pollinators. Planting will commence for Spring 2024. Any comments and feedback will be much appreciated. Again thanks go to UK Shared Prosperity Fund for the award of £2,800 which will fund a full year of Up the Pole Planters.

Town Council Website

The new website is up and running. Please have a look and send in any comments. Access can be made easily from our Facebook page where we upload all our agendas and now our draft minutes. It is by no means fully populated yet but work continues. Please email info@bartonuponhumbertowncouncil.gov.uk with any comments.



Hanging Basket Competition 2023

The hanging basket competition for best business and residential baskets took place in the summer. Thanks to the Bartonian delivery volunteers for selecting entries from the displays they saw while delivering the magazine. Judges visited all entries in the town, viewing from the street, and winners were picked. Pictured are the Business winner **Gee Koshy** of The Sloop Inn and 3rd place in the residential section, **Linda Howden**. 1st place winner Paul Whittington and 2nd placed Sarah Evans were unfortunately unable to attend the presentation but have had their certificates and vouchers delivered.



Campaign to Protect Rural England Northern Lincolnshire Best Kept Small Town Competition

Barton has been placed joint third in the Campaign to Protect Rural England Northern Lincolnshire Best Kept Small Town Competition. This is great news for the town as it shows how committed and dedicated residents are in keeping the town looking really nice. The points for Broughton in first and Epworth in second place were really close. **Well done to all.**

A Year of Barton Upon Humber Town Markets

Welcome Back funding from North Lincolnshire Council really set the ball rolling to establish a Saturday morning market in the Market Place.

With 10 brand new gazebos and tables provided, the Town Council took over the management in September 2022. It has been a really wonderful year. Nearly all of the market days have seen great weather and nearly all of the markets have been fully booked up. Both the Market Place and the Butchery have been carefully set out to enhance both areas with a variety of traders. Each market sees new traders and a great number of regulars. In total there are approximately 30 to 35 traders each market and most are local traders who really enjoy coming to Barton.

It is hoped that the market will increase in size to have traders in all of the Butchery area in the future and that a January Market can be factored in from January 2025. Market related projects include a new storage unit at the rear of the Corn Exchange to make setting up and dismantling so much easier and reduce the need for vehicle use, re-branding of the gazebos and new signage to increase the publicity of the market.

Thanks go to all the traders, Barton Evangelical Church for fantastic refreshments and a warm welcome, to Barton.

Mark Nettleton Home and Garden Services for the transportation of the gazebos and setting up and setting down, the Town Council volunteers and staff and the town's residents and businesses who all help in many ways.

A quote from trader Longfield Farm Services

"I just wanted to say what a pleasure it is to be part of the above market. I attend to help my daughter and family of Longfield Farm Services- Barrow Upon Humber and I have to say we would never go anywhere else.

The organisation, the helpful, dedicated team who run/organise this market are a pleasure to work with, nothing is too much trouble, so easy to set up, pack up safely, always on hand to help.

Importantly, the food miles on the fresh produce sold is the least it could be and we have returning customers every market from far and wide - indeed many saying they come early just in case we have sold out!

We have met so many wonderful people both customers and others who all think the market is an amazing idea for Barton and last Saturday with the new park run and football it was brilliant to see so many coming, thanks to all involved in the leaflet drop.

Trying to keep home reared meat local, we cannot thank enough everyone involved, you all deserve a medal! Well done and long may it continue"

BARTON-UPON-HUMBER Remembrance Day/Armistice Sunday 12 November 2023

The Remembrance Day Parade and Services will take place on Sunday 12 November 2023.

The order of the day is as follows:

Parade Assembles with Standards, outside The Assembly Rooms, Queen Street, Barton: The Assembly Rooms, Queen Street: 10.15 a.m. Depart Queen Street: 10.30 a.m. Arrive at the War Memorial on Barrow Road: 10.50 a.m. Silence observed: 11.00 a.m. Service at St. Mary's Church on Burgate: 11.30 a.m.

Standards will be laid in the Church and the names of the fallen read out. Wreaths will be laid at the Memorial Service at The Cenotaph.



ATMs

Useful information

This is a list of the ATMs in Barton, along with the machine operator and their contact details if you should find one not working or damaged. If you encounter an issue with an ATM not dispensing cash as expected you should contact your own bank.

Free to use machines:

Operated by Cardtronics (contact 01707 632800)

Co-op, 12 Market Place
McColls, 21/23 High Street

Operated by Note Machine (contact 0800 068 9368 or enquiries@notemachine.com)

Esso Service Station
Ferryby Road

Operated by Paypoint (contact 0330 400 0000)

Heron Foods (inside), High Street
One Stop (inside) 89 Fleetgate

Operated by RBS/NatWest (contact 0800 015 3199)

Tesco Maltkiln Road

Chargeable machine (£1.99)

Operated by Cardtronics (contact 01707 632800)

CR Stores (inside)
97 Caistor Road

Cash is also available at the Post Office counter at 32 Burgate from 8.45am to 5.30pm Monday to Friday and 8.45am to 1pm on Saturday.

We have had the ATM information verified by LINK (link.co.uk). The Town Council is not responsible for ATMs.

Barton Library Opening Hours

Monday and Thursday, 9am - 6pm
Tuesday, Wednesday and Friday 9am - 5pm
Saturday: 9am to 3pm*
Sunday: 9am to 3pm*
Closed on Bank Holidays

PLEASE NOTE: From 12pm to 3pm on Saturdays and 9am to 3pm on Sundays there is no public computer access and no customer advisors on site. Customers will have access to the library via the main reception entrance only and will be able to use self-service to issue and return books.

New businesses attracted to Barton

A new burst of building activity on Falklands Way heralds the arrival of several new businesses in Barton.

Land on the industrial estate is being cleared, and constructors are busy preparing the site for building and infrastructure work.

So, what is the site going to be used for?

Neil King contacted Duncan Willey of PPH Commercial, the letting agent for the site, who told us "The site is called the Trade Yard and is a new development by leading developers Allenby Commercial." He added "The vision is to create a Trade Hub with national names occupying the other units, creating a one-stop for businesses and DIYers, serving the urban and rural area of Barton District."

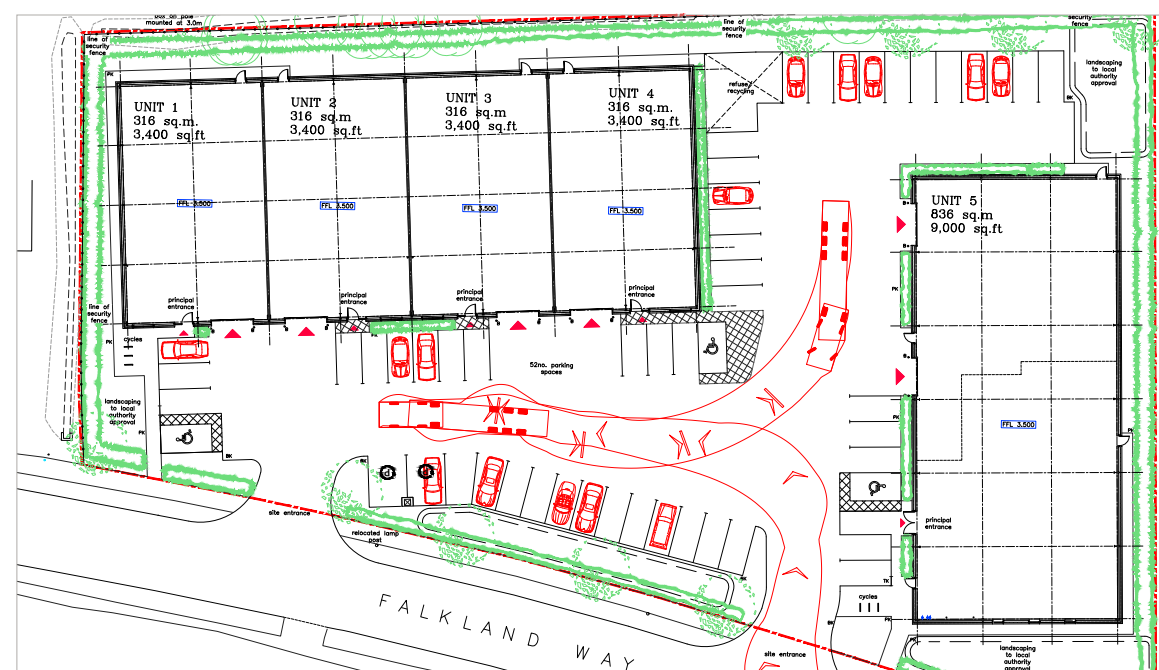
The site will house four smaller units of 3,400 SQFT and a larger unit of 9,000 SQFT. There is a car park on-site with forty-seven spaces.

The larger unit has already been let to a well-known national trade counter operator, and PPH is also



currently in discussions with various parties regarding the development.

Duncan told us "The Trade Yard Barton is a prime opportunity for trade, warehouse and light industrial occupiers looking for well-connected, high-quality business space in North Lincolnshire." He added, "It is a model that has been successful in similar locations to Barton."



Barton-upon-Humber's Banking Hub progressing well

Building work has now started on Barton-upon-Humber's new Banking Hub which is currently on track to open by the end of this year.

The new Banking Hub will be at 6 Market Place (the former Lloyds Bank premises) and the team at Cash Access UK are working hard to get the premises ready for opening soon. Cash Access UK, the organisation set up to protect nationwide access to cash, is a not-for-profit company owned and funded by nine major high street banks. They have already opened 10 Banking Hub services across the country which are having a positive impact in these communities.

The Hub in Barton-upon-Humber will offer a counter service operated by the Post Office, where customers of all major banks and building societies can carry out regular cash transactions, every day.

- You will be able to:
 - Withdraw cash
 - Deposit cash and cheques
 - Make balance enquiries
 - Pay utility bills

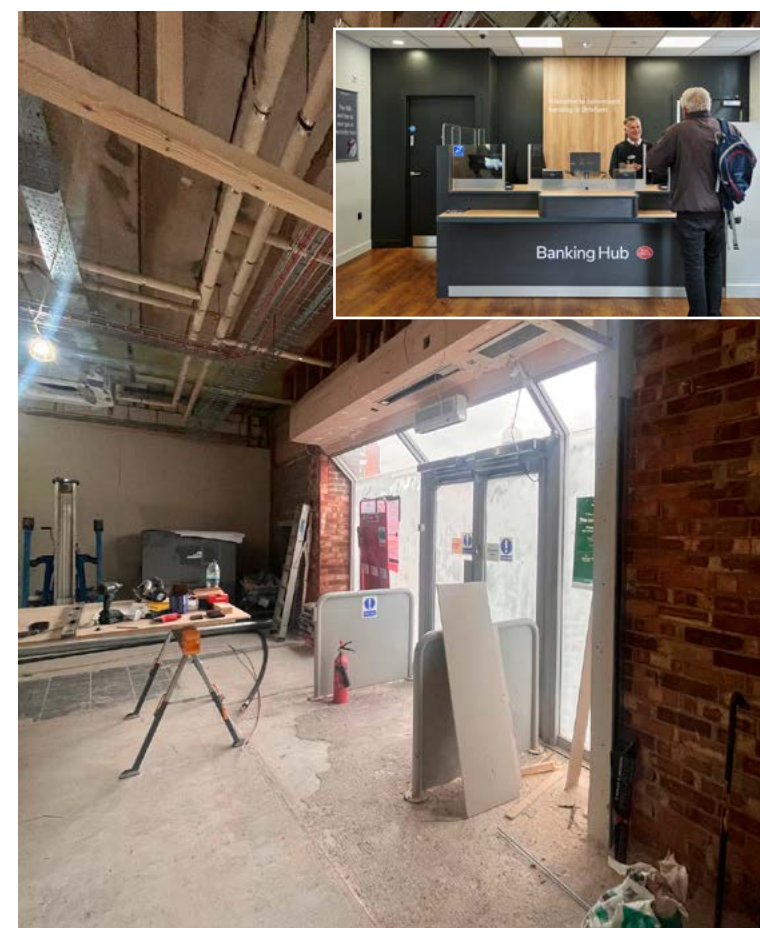
You will also be able to talk face-to-face to a community banker from your own bank about more complicated banking matters such as managing your account, payments and transfers, getting online and many other things.

Community Bankers will work on rotation, with a different bank available on each day of the week:

- Monday: HSBC
- Tuesday: NatWest
- Wednesday: Lloyds
- Thursday: Santander (pm)
- Friday: Barclays

Cash Access UK will keep the community updated with progress and the planned opening date. Latest information is available from their website - <https://www.cashaccess.co.uk/hubs/barton-upon-humber-north-lincolnshire/>.

They are working hard to open the Hub as soon as possible and look forward to supporting local people and businesses with cash services.



40 years in the business

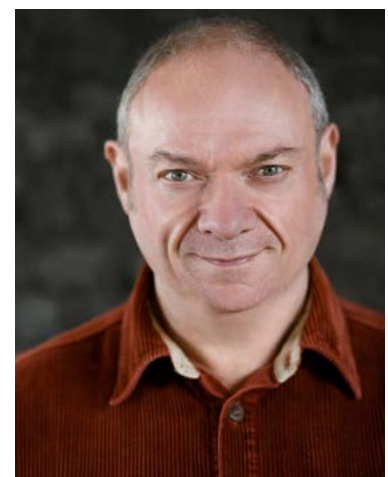
Paul Tate, a born and bred Bartonian became a professional actor in 1984 and next year celebrates 40 years in the business and also a large Birthday with an 0 in it! A double whammy!

When he was younger he was a stalwart of the Barton amateur theatre scene and performed in many plays, musicals and concerts in the area. He was also Head Chorister at St.Mary's Church in his teens.

"I have so many people to thank for my interest in theatre. My Nan used to take me to see shows when I was little, and the teachers at Baysgarth School, Alan Wright, Geoff Brown, Barrie Cooper and of course the Headmaster, Ray Smithson, who all encouraged and helped me so much in the annual musicals. I couldn't wait to find out what the next one would be and would eagerly keep looking on the school notice board to find out. I was also a founder member of BADAOS and cherish those happy days. I learnt a lot from those shows," Paul reminisced.

Paul founded Friends At Barton (FAB for short) in 2016 in order to give his friends a platform to still perform, entertain the people of Barton and the surrounding villages and also raise funds for local and national charities. So far with productions of A Christmas Carol, The Snow Queen and Alice in Wonderland they have helped St.Andrew's Hospice, Lindsey Lodge, The Brain Tumour Organisation, Scunthorpe Samaritans, The Children's Heart Surgery Fund, Alzheimer's Research UK, The Queen Street School Preservation Trust, St.Mary's Church, Jerry Green Dog Rescue and their upcoming production Pinocchio will raise funds for The RSPCA and Kidney Research UK.

Pinocchio will be a full on "Oh, no it isn't! Oh, yes it is!" pantomime version of Pinocchio. FAB's previous shows had pantomime elements but this will have all the audience participation, a Goodie, a Baddie, a Ghost and something for the whole family. Once again this will be performed at The Joseph Wright Hall (the old Salvation Army building) on Queen Street.



This will be the first time EVER that FAB have done a Panto. As well as writing the show, Paul is also directing and playing Dame Mona Lot. You might remember him as part of Dame Nation (a bunch of Panto Dames) in the 2022 series of Britain's Got Talent where they reached the Semi-Finals.

"I can't wait to be back on the Barton stage and would like to say a massive THANK YOU to all the cast and crew, to everyone at the Wilderspin National School Museum for their assistance, to Newton Printing Services for the posters, flyers, programmes and to The George for sponsorship. Everyone is working so hard," said Paul.

He adds "Even though I've been a professional performer for nearly 40 years I have no qualms about being involved in amateur theatre. It's where I began and where better than to do it in my old home town!"

Tickets for Pinocchio are only £5 each! "Theatre tickets are so expensive nowadays and I want our shows to be affordable for all," Paul explained.

You can buy tickets by either phoning the Box Office: 01652-635172 or in person Thursday to Saturday from 10am to 3pm at the Wilderspin National School Museum.

Paul and everyone at FAB hope you enjoy the show!

News from the South Bank Players

The Barton Ghost Walk season is now in full swing. If you missed our ever-popular Halloween Walk don't worry because the next one is just around the corner on Friday November 24.

We then take a break for Christmas and return on Friday January 26, with a further two walks on Friday February 23 and Friday March 22. All walks start at 7.30pm prompt from Baysgarth House Museum. The route is just over a mile and takes about 1 hour and 15 minutes to complete (slightly longer for larger groups). We recommend you dress warmly and wear sensible shoes! After the walks you can usually find the cast (including the

skeleton dog) in The George! Tickets can be booked in advance from our website www.sbplayers.co.uk or purchased on the night, and all tickets are £5. Our Murder Mystery A Silent But Deadly Auction has been performed twice now, at the Nelthorpe Arms in South Ferriby (which was sold out weeks in advance), and for Goxhill WI. We are hoping to do a repeat performance in the New Year at The Haven Inn at Barrow Haven but

dates have not yet been confirmed. We've also had enquiries from other WI groups as well. Please keep an eye on our website and Facebook pages for details of future events.

Anyone interested in joining the group to help out in any capacity will be welcomed!

Contact Liz Drury at liz@lizdrury.co.uk for details.

Barton Community Band competition success

Barton Community Band has a great result in a national competition as Neil King found out.

The band competed at the National Brass Band Championship of Great Britain, held at Cheltenham Racecourse on Sunday, September 17, competing against the 20 best bands in the country. They came third- not shabby for a small-town community band!

In total 471 bands participated in the qualification series, meaning Barton has a rather accomplished band.

The competitions are strictly adjudicated. All the bands play the same contest piece - in this case, "Lost Village of Imber" by Christopher Bond.

The piece tells the story of the village of Imber on Salisbury Plain, inhabited for more than 1,000 years when it was evacuated in 1943 to make way for military training in the Second World War. At the time, with preparations for the Allied invasion of Europe underway, most villagers put up no resistance, despite being upset, with the belief that they'd return once the war had concluded. To this day, Imber and its surrounding land remain a military training ground. The villagers never returned, and just the shell of what was once a community remains.

The adjudicators cannot see which band is playing, so they can judge the bands solely on what they hear. To add more pressure, one of the adjudicators was the composer of the piece, Christopher Bond.

Talking to band members, it became apparent that entering a national competition was a significant commitment.

The band's success resulted from several months of rehearsal, two hours a night, twice a week. To give the band the "feel" of the concert hall they were to perform, the band rehearsed at the City of Hull rehearsal room and also held a well-attended open rehearsal at the Albemarle Music Centre in Hull.

The day before the competition, the band practised from 11am to 12.30pm at the Corn Exchange before travelling to Cheltenham and staying over at a local hotel.

The contest draw was at 8.15 on Sunday morning, with the contest starting at 9.30 so it was an early start to a long day.

Drawn at number five, the band needed to get down to the race course immediately. Having performed, the band then had to wait until 4pm to get the results. The official line here is that they spent the time "relaxing", but I've seen the photos, and it didn't look very relaxing to me!

As well as time and effort, the Barton Community Band faced a considerable financial outlay.

Secretary Stuart Ross, told us "Competitions are a great way for us to test the band and generate awareness of Barton, but they are becoming costly to compete in". He added, "There are around 27 players in the band, plus our Musical Director.

We need to transport them all to the venues, and because of the number of bands competing, competitions begin early. We sometimes need to



travel the day before the contest and, as a result, face accommodation costs."

The Barton Community Band raises all of its income from the subs paid by its members and by performing concerts.

Neil asked how expensive the trip to Cheltenham was.

Stuart explained "Contest Entry was £375, coach travel around £3000, and hotels added another £3500. Other fees add another £2000. That's a lot of money for the band members to find."

The Barton Community Band would welcome approaches from businesses or organisations that would like to support them in flying the flag for Barton in this and other competitions. Barton's



I went last year and it was a great evening out but the church isn't the warmest of buildings so it's a good idea to take a blanket!

The Band is keen to develop new players. It is open to complete beginners (including adult beginners) and more experienced players, and they rehearse every Tuesday and Thursday evening at the Corn Exchange in Market Place.

The Barton Community Band lives up to its name, and if you would like to become involved with a great bunch of people and get to blow your own trumpet twice a week, contact Stuart at secretary. bartoncommunityband@gmail.com

Wilderspin School Museum



We are thrilled that our Memory Café Project, launched in 2022, has been awarded a Marsh Award for Museum Learning by the British Museum and the Marsh Charitable Trust.

The project was prompted by a successful reminiscence session in our Wartime Classroom which involved children and adults talking together. Museum volunteers later visited the Living Later Life Well group at Trinity to pilot a selection of objects from our collection and to see how they prompted discussion and recollections. Memory Boxes were then put together for museum visitors to chat about over a cup of tea, and they were used with residents from Eagle House as part of an intergenerational session with children from Barton St. Peter's School. A Chatty Café team has taken the project forward organising monthly drop-ins focussing on a theme for discussion and reminiscence. All of this built on work our volunteers had done in

previous years collecting childhood and school memories to create our Reminiscence Classroom.

The 'Volunteers for Museum Learning' award forms part of a programme of awards presented by the Marsh Charitable Trust in the fields of science, ecology, conservation, heritage, literature and volunteering. The aim is to recognise those volunteers who engage directly with museum visitors in any capacity.

The Museum was the winner for the East Midlands region which involved some of our volunteers attending an award ceremony at the British Museum.

Although the Museum is closed over the winter period as an energy saving measure our volunteers will



be organising Open Days during which the Chatty Café will be operating along with other special family activities - full details on our website www.wilderspinschool.org.uk

Above: Wilderspin volunteers (left) Rose Jackson, Jean Cannon and (right) Ian Wolesey with (centre) Brian Marsh OBE, Muriel Gray FRSE and Project Coordinator Ali Badley.

Winter Warmers at Wilderspin

Open Days

Fridays, 11am - 3pm

17 November

15 December

19 January

16 February

Christmas Crafts Fair

Saturday 25 November

12 - 4pm

THE ROPEWALK CHRISTMAS ART MARKET

DECEMBER 2 & 3, 10AM - 4PM

OVER 50 STALLS OF SEASONAL ART & CRAFT



SPONSORED BY



The Ropewalk, Maltkiln Road, Barton upon Humber, North Lincolnshire. DN18 5JT. 01652 660380
www.the-ropewalk.co.uk | www.roperyhall.co.uk



Give the gift of art this Christmas with The Ropewalk

With less than seven weeks to go until the big day, The Ropewalk is excited to share a fantastic festive lineup of shows and events, plus an impressive array of gift ideas that are sure to please even the choosiest of recipients!

The annual **Christmas Art Market** will take place during the first weekend of December, Saturday 2 and Sunday 3, between 10am and 4pm. The Art Market is well-known for its extensive display of high-quality arts and crafts handmade by artists both local and regional, such as homeware, Christmas decorations, jewellery, bags and accessories and more. It's the perfect place to do some Christmas shopping. This event is always incredibly popular with many people returning year-on-year to browse and shop the huge selection of arts and crafts available to purchase - not forgetting the cake tombola!

For additional gift shopping, the **Craft Gallery** at the southern end of The Ropewalk is home to a large number of high-quality goods available to purchase. Here you can shop ceramics, homeware, jewellery, plus lots more. It's a great place to pick up a one-of-a-kind gift this Christmas that will be sure to put a smile on the face of a loved one.

As always, the **Ropery Hall** has an exciting lineup of shows this December such as Charles Dickens' A Christmas Carol, star of Britain's Got

Talent Barbara Nice with her Festive Special, the Bay City Rollers Rollin' Into Christmas tour plus more. If you're looking for a festive night out, you know where to go! The venue also opens early on Fridays to sell freshly made pizzas before the show. Gift vouchers are available to purchase for Ropery Hall, with its exciting lineup of performances coming up next year including BBC Radio 1 Album of the Week winners The Breach, former BBC and ITN journalist and broadcaster John Sergeant, plus lots more exciting comedy, music and theatre performances. There really is a show for everyone.

If after all the shows and Christmas shopping you need a pitstop, be sure to visit the **Coffee Shop** to refuel. With food made from locally-sourced produce, and a carefully curated seasonal menu, you'll be in for a real treat.

Follow The Ropewalk on Facebook and Instagram to keep up-to-date with everything going on, including new show and exhibition announcements, menu updates, new-in at the Craft Gallery plus more.

Could you be a Silver Singer?

The **Living Later Life Well Project** is starting a singing group, and you're invited!

Starting in January 2024, the project is organising a weekly get-together to sing songs from the 1940s to 1960s, including hits from the musicals, traditional songs and folk classics. We'll be led by Debbie who currently manages the 'Tuneless Choir' in Barton, so we're in safe hands - as long as you enjoy music and singing, and can bring a sense of humour, you'll be very welcome.

Importantly, you don't need to be able to sing well to be part of the Silver Singers!

The group will meet every Wednesday from 1pm to 2pm at Trinity Methodist Church, Holydyke. We'll sing for approximately 45 minutes followed by tea/coffee and biscuits, all for a suggested donation of £2 per session. If you can't wait until January, you're in luck! We are organising a special festive singing afternoon on Wednesday December 13 from 1pm to 2.30pm in the Lecture Hall at Trinity Methodist Church, again for a suggested donation of £2. We'll be singing all the

Christmas classics, followed by mince pies and mulled wine, so come and get into the Christmas spirit with us!

Anybody aged 60 and over is welcome to attend, but spaces must be booked for both the regular singing group, and the one-off Christmas session. Please get in touch with Jo Marwood, Community Outreach Manager on 07821 900623 or email jo.marwood.bartontrinity@outlook.com.

The Living Later Life Well project runs activities for people aged 60 and over, to reduce loneliness and social isolation in our older community. Our programme includes exercise classes, craft workshops, guitar sessions, a book club, coffee mornings, trips and more!

Newsletters are available from Trinity Methodist Church and various outlets around Barton, or on our Facebook page www.facebook.com/LivingLaterLifeWell or by email.

Goxhill and Barrow Scout Group

The Group's funding application to the National Lottery has now moved onto the next stage and it has been advised that, to ensure maximum funding it should seek other community groups to join using the new facility.

So, any community group seeking a place to use, please get in touch with Group Scout Leader, Andy Oliver.

Over the holidays the Scouts enjoyed a great weekend camp for Cubs and Scouts at Primrose Hill, there were loads of activities to do; such as shooting, archery, axe throwing, pioneering and go-carting. Since returning to weekly sessions after the summer holidays the Beavers have been working on designing a model which they will then go onto build from scratch. They are also working towards their Communication and Fitness badges as well as attending a District Beaver campfire evening.

The Cubs have been working on their craft skills by making gifts from felting and soap as well as completing their Money Skills badge which includes having a surprise guest speaker. They also have a couple of night hikes planned. And best of all

they will be visiting Lab Cocoa in Lacey to learn how to make chocolate and make some of their own chocolate creations.

The Scouts have been taking part in a Master Chef Soup and bread making competition as well as making Warhammer models as part of their Model-Making badge, taking part in a 'Scout Got Talent' night and also going on a night hike along the Humber bank. They will also be doing their First Aid badge with LIVES getting them up to DoE standard.

Having starting planning the refurbishment of our shooting range incorporating bespoke artwork and murals the Explorers participated in a District Top Awards event in meal planning and cooking on Trangia stoves as wells as hikes and map reading.

Andy Oliver
Group Scout Leader

Barton Park Bowls Club

As the sun sets on another season we can reflect over the highlights and absorb the highs and lows pertaining to the summer months just recently past.

Lows what lows? Only a departure and a retirement. A departure to Australia where Peter Binnington will hope to continue with both enthusiasm and gusto routinely despatching his woods to the opposite end of the green. Who knows perhaps a pre-season friendly at his new club down under, oh well dream on!

In retirement from the sport Eric Parks has become an honorary life member and will be much missed from the green. He has however retired with the club's gratitude and best wishes. As for some of the highlights....

An ever-increasing membership, this flies in the sometimes-dwindling membership numbers apparent elsewhere. Perhaps our warm & friendly nature, welcoming, encouraging and nurturing new players into the fold. Or maybe the delightful surroundings of a park that has acquired the much-vaunted green flag status, a process in which the club plays its part by maintaining the green to a

high standard, is a pull for those wishing to enjoy the game.

Another high are our successes in the various leagues, from the highly competitive Scunthorpe District Bowling League Division 2, fourth this year after a ninth placed finish last year through to the more gentle and less competitive Tuesday Afternoon League in which the club finished three quarters up the table and in doing so helping to bring newer players into the sport. Whatever your skill or competitive level there is a warm welcome waiting at Barton Park.

In promoting this ethos Barton Park hosts various social events throughout the year. The highly popular race night is again planned for the Spring preceded by the Annual Club Dinner. Watch this space for further info...

For further info please contact: ianpapworth@gmail.com

1st Barton Rainbows Brownies & Guides

There have been Brownies and Guides in Barton since August 1921 and Rainbows since January 1988. In this time many girls have had lots of different experiences - from weekly meetings, camping, pack holidays and holidays to Our Chalet in Switzerland and having lots of fun at Euro Disney.

At one time there were four Brownie units and two Guide units - now we have just one of each. Leaders are all volunteers, giving of their time freely - it's not just the hour/hour and half per week, there is lots of preparation for weekly meetings. Pack holidays and camps also mean giving their time at weekends and holiday time. As you can imagine leadership has seen many changes over the years - all of the present leaders started as Brownies at seven years (three in Barton Units and, thankfully, they have stayed with us). Service awards range from 10 to 40 plus years. Adults who have 'retired' still come back to help out occasionally - for which we are grateful.

The programme and uniforms have changed significantly over the years, the last major change was five years ago and it is constantly being updated. There used to be over 100 interest badges for the girls to work through, now there are only 54 - they are varied ranging from Drawing, to Archaeology, to Space and everything in between.

We like to think that we make the meetings fun and varied - so that the girls don't think it's an extension of school.

Each section can work towards Bronze, Silver and Gold awards - but to gain these they do have to put some work in at home.



If your daughter is interested in becoming a Rainbow, Brownie or Guide then please register online at www.girlguidinguk.org/joinus.

Likewise if you are interested in volunteering, the address is the same.

If you have any memories or photographs you would like to share of when you were a Rainbow, Brownie or Guide please let me know.

Sue Wind
windbrownowl@aol.com

Allotments

Time to prepare for next year

As winter approaches, work continues on the allotments. In some ways this is the most critical time as the focus is getting the ground ready for next year. It's quite straightforward really, clear annual and perennial weeds and add plenty of organic matter whether you dig or "no dig". Easy to say, but some hard work involved!

The same applies for our gardens too, but do leave some dead stalks for overwintering insects.

It's not all digging as you can also sow broad beans and plant garlic now, as well as some shallots and onions. It's best not to leave too much bare soil as rain can wash out the nutrients, so green manure is a good bet too.

It's also a good time to consider applying for a plot if you want to start growing more than you can manage at home. We have had a huge turn-over recently and the waiting lists have come right down, so if you want a chance of a plot within the next 12 months apply now.

Visit our website or contact me for a form. www.bartonallotments.org.uk

Neil Jacques
secretary@bartonallotments@hotmail.com

Reducing single-use plastics



I'm Amie Alissa Watson, a Barton-Upon-Humber Town Councillor, and I'm excited to introduce you to our initiative, "Plastic Free Barton."

We are on a mission to reduce single-use plastic in our town and promote a more sustainable and environmentally-friendly community.

Our goal is to encourage local businesses, cafes, and publicans to join us in this endeavour by offering refills within their premises and proudly displaying a badge that signifies their commitment to reducing single-use plastics.

Single-use plastics have a detrimental impact on our environment, and as a community, we believe it is our responsibility to take meaningful steps towards reducing their usage. By offering refills and becoming a part of our "Plastic Free Barton" scheme, your establishment can play a crucial role in this effort.

Here are some key benefits of joining our initiative:

- **Community Engagement: Being a part of "Plastic Free Barton" demonstrates your commitment to environmental sustainability and engages your customers in a shared mission.**
- **Positive Brand Image: Displaying the scheme's badge will enhance your business's reputation as a responsible and eco-conscious establishment.**
- **Environmental Impact: By reducing single-use plastics, you will contribute to a cleaner, healthier environment for our community and future generations.**

If you're interested in joining us on our mission to reduce single-use plastics, please reach out.

I would be delighted to provide more information and assistance in implementing refill options within your premises.

Together, we can make a significant difference in our town's environmental footprint and create a more sustainable future.

I look forward to your positive response and hope to welcome your business to our "Plastic Free Barton" initiative.

Please do not hesitate to contact me if you have any questions or require further information.

Clr Amie Watson
Barton-Upon-Humber Town Council

Barton to New Holland Flood Alleviation Scheme

Flooding is a long-standing problem for the communities of Barton, Barrow, and New Holland. Previous tidal flood incidents have impacted lives, businesses, and homes. Highlighting the need for improved tidal flood defences and for communities in the area to be better prepared.

The Environment Agency is working with project partners Jacobs and Arup to develop a sustainable approach to reduce the impacts of tidal flooding which is adaptable and resilient to the impacts of climate change.

Find out more about the project and our proposals at our upcoming events in 2024:

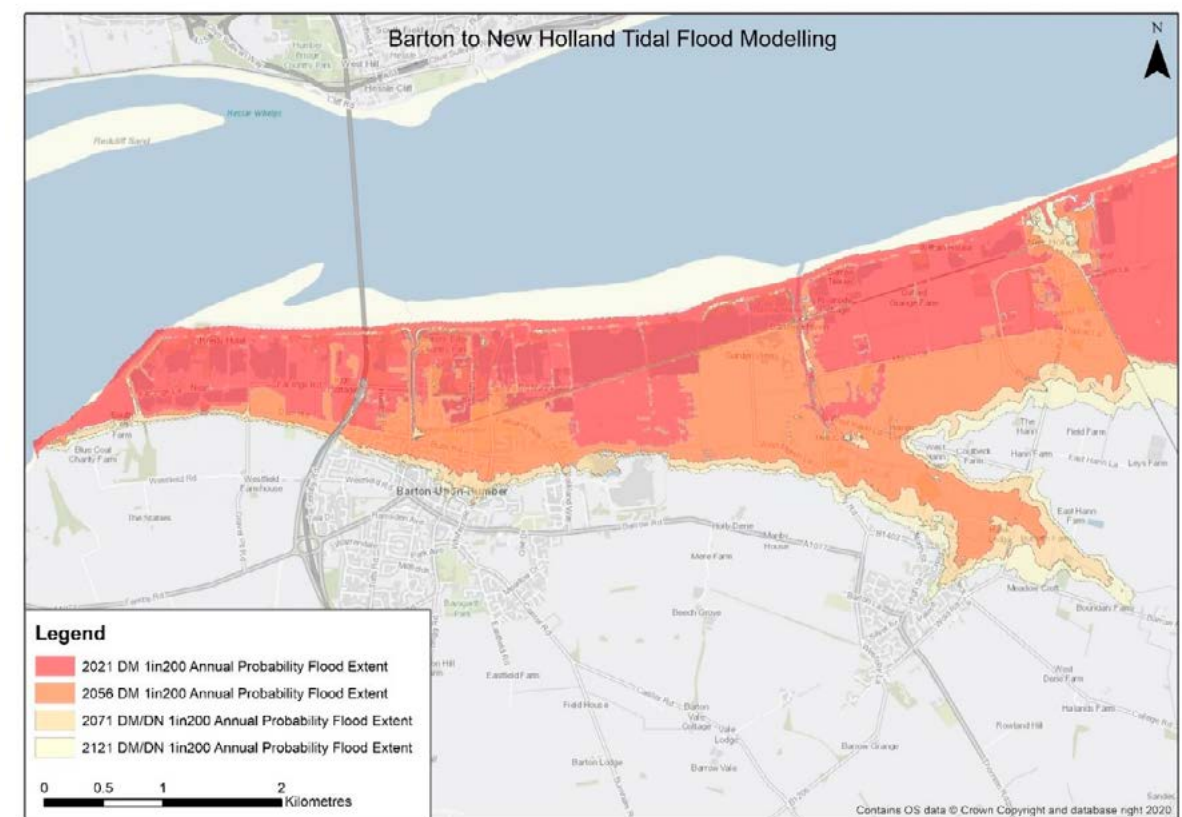
21.02.24 - New Holland Community Centre, Barrow Road, DN19 7RR - 10:00 - 13:00

22.02.24 - Haven Inn, Ferry Road, DN19 7EX - 12:00 - 16:00

22.02.24 - The Ropewalk, Maltkiln Road, DN18 5JT - 17:00 - 20:00

23.02.24 - The Ropewalk, Maltkiln Road, DN18 5JT - 12:00 - 17:00

The map (right) shows the flood risk to the communities of Barton, Barrow, Barrow Haven, and New



Or search Barton to New Holland Citizen Space online or scan our QR code

EMMA LOUISE LAW

Over 16 years Extensive Experience in Legal Practice

Specialising in:

- Wills
- Trusts
- Power of Attorney
- Tax Planning
- Care Fee Planning

Home Visits Available (including Weekends & Evenings)



07590 234630
emmabell171@gmail.com



BARTON AREA FOOD BANK

November this year is proving to be a very busy month for the Food Bank as we prepare for the Christmas period and start building our new store.

It will be a year this month since the charity first submitted a planning application for a larger store to meet increasing demand. It was very difficult to store and constantly transport food to the Food Bank as our current store is now too small. So after many unforeseen circumstances, we are at last starting to build. This will take only a few days once the base is laid as the building is pre-constructed and will cause little if any disruption.

Unfortunately, it will not be ready to occupy immediately as food bank volunteers will then have to install all the fixtures and fittings, which will help keep our costs down. We are hoping to start the New Year free from constantly having to carry our stocks from various homes around Barton and having all our stock in one place.

The Food Bank is very grateful to many local individuals, companies, businesses, organisations and councils around the Barton area who have helped us achieve this in just over a year, although we still have a slight shortfall. Nevertheless, we are confident that our needs will be met. The important issue is that this has been done without affecting the donations we receive for food, toiletries and pet food.

Our Tesco Christmas collection is from November 30 until December 2. It is an important opportunity to boost our stock at this busy time and especially to meet with members of the public.

If anyone would like any further information about our work, please ring the Food Bank mobile 07526 472683.

Thank you sincerely for all the support and best wishes for Christmas and the New Year.

BARTON EVANGELICAL CHURCH

Carol Service
with Barton Community Band
17th December
Baysgarth School 10.30am

Carols for Christmas Eve
24th December
Church in the Market Place
10.30am

www.bartonec.org.uk

Barton Rotary Club

At Barton Christmas Festival on November 25, our "Photos with Santa" event is being held at Trinity Church Lecture Hall from 2pm until 4.30pm. £5 per child including a photograph and sweets. Also, Trinity Church will provide refreshments, and a "Soft Toy Tombola". Entrance on Vestry Lane.

On Sunday December 10 at 3pm, again in Trinity Church Lecture Hall, Barton Rotary Club is once again providing a free Christmas Afternoon Tea with entertainment by the

Barton Ukulele Band and others. There will be a raffle and this event is open to all senior citizens.

If you require transport to this event, please phone Ted Treasure on 01469 531117.

Barton Rotary Club, helped by Trinity Methodist Church and the White Swan, is again cooking and delivering free Christmas Day dinners to senior citizens who may be on their own or have difficulty preparing a meal. Please contact us and we will deliver one to your home on Christmas Day. Just phone Ted Treasure on 01469 531117 with your name and address and telephone number by Sunday December 10, so that a club member can contact you to make the delivery arrangements.

Santa will again be touring some Barton Streets helped by Barton Rotary jointly with the Barton Lions. We will not be knocking on doors but helpers will have collection buckets for donations.

Dates from Monday December 4 to Friday 8 and Monday December 11 to Thursday December 14.

Further details will be announced later.

Barton upon Humber Rotary Club
Santa Meet & Greet
Enjoy Hot Chocolate & a Cookie

At Ropery Hall Barton
Saturday 9th December
10am until 1pm
Autism & special needs friendly Relaxed session
1pm until 2pm
Take your own selfie with Santa

£5.00 per child
Payment on the door

Rotary

Barton Volunteers

Community volunteering has always been particularly strong in Barton with a wealth of groups and organisations covering a wide range of interests.

When Covid hit in 2020 volunteering took on a higher level of importance as public services struggled to meet the unprecedented demand caused by the unfolding crisis. Barton Volunteers was established in 2020 in response to these needs, firstly to run meals on wheels, deliver information sheets, collect prescriptions and marshal vaccine queues. Over the last three years the group of individuals has continued to offer support when needed and developed further areas of interest.

This work has now been recognised with funding from the UK Shared Prosperity Fund. The funding will match additional money from Barton Tourism Partnership and The Ropewalk to employ a volunteer co-ordinator and to offer training opportunities and social events



for volunteers. Caroline Edwards has recently been appointed to the post and will be contacting all the registered volunteers as well as host organisations to look at how volunteering can be developed in Barton. Caroline works Tuesday to Friday and can be contacted on 01652 660380

One volunteer group that is growing every month is the Barton Volunteers Gardening Group. The group was mentioned in the last issue of the Bartonian and new members have joined following the article. All are welcome to join with no experience required. Full instructions are given by Alison Walling our gardener.

If you want to meet people, work in the fresh air and learn more about gardening whilst brightening up the town and can offer a morning or afternoon on alternate Tuesdays do get in touch with Liz on 07792775101 to be added to the WhatsApp group.



Humber & Wolds Rural Action Voluntary Car Scheme

Humber & Wolds Rural Action delivers a Voluntary Car Scheme across North Lincolnshire, which helps people with genuine transport difficulties over 18 years to get to important appointments such as doctors, hospitals, dentists, clinics, support groups, local shops etc.

Volunteers give their time freely but charge a mileage rate of 45p per mile to cover the cost of fuel and other vehicle running costs. Drivers will wait up to an hour and a half at a destination, but this can be flexible if more time is required. All our drivers are DBS checked. To find out more about our service, please contact the office on 01652 637700 between the hours of 9am and 12pm - there is an answer machine facility if lines are busy. We will be very happy to discuss your requirements with you and register you with the scheme.

Humber & Wolds Rural Action need more volunteer drivers and we are looking for drivers in Barton and the surrounding villages. If you enjoy driving (or know someone who does!) and would like to give something back to your community, we would love to hear from you. Please contact Carole Foster on 01652 637700 or email voluntarycarservice@hwrc.org.uk. You choose how much time you wish to volunteer, and all expenses are reimbursed.

News from Barton Lions

Members of Barton Lions Club were given an informative presentation at a recent meeting by Barton Short Mat Bowls Club and they look forward to receiving photos of the club in their smart new shirts and bowls emblazoned with the Lions logo stickers.

We are proud to be able to offer sponsorship support to this new local inclusive club and wish them luck for the future.

Every year Barton Lions organises a trip to Brigg Garden Centre for the senior citizens of Barton. This year's trip is Tuesday November 14,

there may still be places available so please get in touch if you would like to go.

Santa will be out and about on his sleigh again in December this year. Look out for more details in the coming weeks



Special Offer - FREE MEMBERSHIP



Would you like to be part of a charity at the heart of YOUR community. Barton Lions Club puts on and supports many events during the year and is looking for new members who can help continue to undertake this highly recognised activity. Meetings are a maximum of two

per month and are held at The Corn Exchange in Barton. We continue to help and support the community of Barton in a variety of ways. If you would like to give your help and support to your community then becoming a Lion could be for you. For more information, please contact us via Facebook <https://www.facebook.com/barton.lions> or email info@bartonlions.co.uk and make a difference.



Winter Warmers

Wilderspin National School Museum is opening for winter warmer sessions on selected Fridays between 11am and 3pm.

As well as the historic school room open to view, and the "School Life" exhibition about the Barton Church School, children can follow Mr. Wilderspin's Marvellous Menagerie Trail, and solve puzzles and teasers which adult "pupils" will enjoy too - bringing back memories of long division and pounds, shillings and pence!

Pop in too for a catch-up and a cuppa! Winter warmer dates are:

Friday 17 November
11am - 3pm

Saturday 25 November
12pm - 4pm Christmas Fair

Friday 15 December
11am - 3pm

Friday 19 January
11am - 3pm

Friday 16 February
11am - 3pm

Put them in your diary and volunteer if you can - let us know as we'll be planning activities and events on each date.

ST
SCUNTHORPE
THEATRES

What's on

North Lincolnshire Council

TONY PEERS LTD IN ASSOCIATION WITH THE BATHS HALL PRESENTS

ANNIE FANNY
RETURNS IN A PANTOMIME AS OLD AS TIME

DARREN JOHNSON
AS ANNIE FANNY

BEAUTY AND THE BEAST

ZOE WRIGHT AS BELLE
LAUREN BUDD AS FAIRY VIRTUE
JESSICA SPANIER AS VANITY
JAKE WEST AS HUGO (BELLE'S FATHER)

DIRECTED BY DARREN JOHNSON

7 - 31 DECEMBER 2023

ST

Brigg Amateur Operatic Society Present
Fiddler On The Roof
Tuesday 21 - Saturday 25 November 2023

ST

THE COMEDY STORE

The Comedy Store
Christmas Show
Saturday 16 December 2023

Scunthorpe Little Theatre Club

CINDERELLA

11th to 13th January 2024

Scunthorpe Little Theatre Club Present
Cinderella
Thursday 11 - Saturday 13 January 2023

ST

THE ULTIMATE RETRO CONCERT!

80's LIVE!!

80's Live
Friday 19 January 2024

Barton: What's On

Nov - Dec 2023

Saturday 4 November
Barton Market
Market Place 8.30am - 2pm
Monthly Market with traders selling a wide range of fresh food, crafts and second-hand tools.

Saturday 4 November and every Saturday
Baysgarth Park parkrun
Baysgarth Park 9am
Weekly parkrun in a beautiful setting.
Facebook @BaysgarthPark parkrun

Wednesday 8 November
Ropewalk Warm Space lunch and film
The Ropewalk 10.00am - 12.30am
Warm space craft activities drop in
Free
12.30pm - 1.30pm
Self Service Canteen Style two course lunch £3

2pm
Film Matinee £3
Weekly on Wednesdays until December

Friday 17 November
Barton Civic Society Lecture: Safeguarding the Past - Shaping the Future
Joseph Wright Hall, Queen Street 2pm
A panel of experts and people with experience of navigating planning regulations or who are custodians of listed buildings discuss the challenges of conservation. Please note this is an afternoon meeting.
£4 non members

Saturday 2 December
Christmas Fair
St Mary's Church, Burgate 10.30am
Bacon Butties available! All welcome.
Free

Saturday 2 & Sunday 3 December
Christmas Art Market
The Ropewalk 10am to 4pm
This popular well-established event in the creative calendar now in its eighteenth year has over 50 artists and craft makers selling original handmade work to the public. Join the thousands of visitors that flock to this event to purchase direct from the maker gifts you won't find on the high street. Cake and craft tombola, exhibitions and performances from Barton Ukuleles and The Ropewalk Singing for Pleasure Group.
Free Admission

Saturday 25 November
Christmas Craft Fair
Assembly Rooms, Queen Street 11am - 5pm
Handmade crafts, Tombola, Raffle Prizes to win. In aid of Young carers
Free entry

Saturday 25 November
Toy Recycling Event
St. Mary's Church Hall 10am - 12pm
Barton St Peters School as part of their Reduce, Reuse, Recycle drive are holding a "Toy Swap" event.
Free entry

Saturday 25 & Sunday 26
Village Art Exhibition
Waters' Edge Visitor Centre 10am - 4pm
Exhibition and sale of original paintings, prints and greetings cards also available.
Free Admission, Artwork to Purchase

Saturday 25th November
The Barton Christmas Festival
See pages 12-13 for all the events and activities

Wednesday 29 November
Barton and District History Group AGM
St Mary's Church Hall 7.30pm
Annual meeting announcing the programme of speakers for 2024
Free

Thursday 30 November
O'Hooley & Tidow
Ropery Hall, The Ropewalk 8pm
Much loved Yorkshire folk duo Belinda O'Hooley and Heidi Tidow have been propelled into newfound fame for penning the theme tune to Sally Wainwright's hit BBC1/HBO drama 'Gentleman Jack', earning them global admiration, an acting role for Belinda on the iconic TV drama Happy Valley, Radio 4 Woman's Hour and concerts that sell out months in advance.
Tickets £20 Box Office 01652 660380

Saturday 2 December
Barton Market
Market Place 8.30am - 2pm
Monthly Market with traders selling a wide range of fresh food, crafts and gifts.

Sunday 10 December
Robin Watercolour Art Class
Waters' Edge Visitor Centre 10.30am - 3pm
A painting workshop for adults wanting to learn a new skill, led by Wendy Bruce.
£28 Booking Essential

Friday 15 December
Folkincs present a Ceilidh
Ropery Hall, The Ropewalk 8pm
Dance, watch or play. All welcome
Tickets £5 Box Office 01652 660380

Saturday 16 & Sunday 17 December
Christmas Craft Experience
Waters' Edge Visitor Centre 11am - 3pm
Included in the workshop: Santa Sleigh Photo Op, Santa Letter writing & post box, Christmas card making, Christmas craft activity.
£5 per child, Drop-in session

Sunday 17 December
Christingle Service
St Mary's Church, Burgate 4pm

Sunday 24 December (Christmas Eve)
Children's Nativity and Christingle Service
Trinity Church, Holydyke 6pm
(11.30pm Midnight Communion)

Sunday 24 December
Traditional Carol Service
St Mary's Church, Burgate 6.30pm

Monday 25 December
Christmas Day Service
Trinity Church, Holydyke 10am

Saturday 30 December
Snake Davis' Alligator Shoes
Ropery Hall, The Ropewalk 8pm
Dance night
Tickets £22 Box Office 01652 660380

We Love Christmas at
Best Wishes of Barton
A Fantastic Selection of Cards & Gifts

JellyCat London | Wrendale Designs
Joma Jewellery
Alice Wheeler Bags and Accessories
Ashleigh & Burwood Home Fragrance
WoodWick Candles | Peter Rabbit & Friends

16 Market Place, Barton-upon-Humber
North Lincolnshire. DN18 5DA
Open: Monday - Saturday
9.15am - 5.15pm

Heartsease Herbal Apothecary

- Gift ideas for all tastes & budgets
- We have a wide range of natural toiletries & essential oils
- Gift vouchers available
- New aroma diffusers in stock
- Incense & Crystals

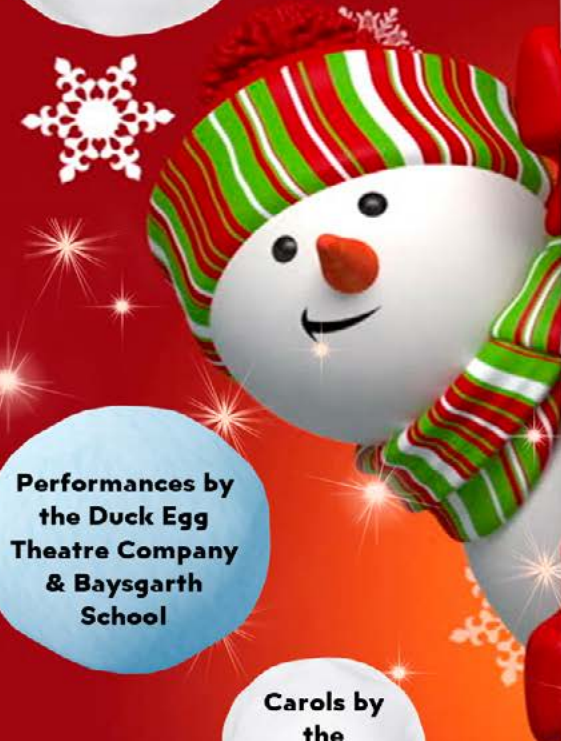
Herbal Medicine & Aromatherapy Supplies
24 High Street,
Barton upon Humber,
North Lincolnshire,
DN18 5PD.
07749944471

www.heartseaseherbal.co.uk

Book your tickets at The Baths Hall Box Office. Monday - Friday 10:30am - 4pm & Saturday 10am - 2pm
Call 01724 296296 or visit: scunthorpetheatres.co.uk

BARTON UPON HUMBER CHRISTMAS FESTIVAL 2023

Live Singing Performances By Route 180 & Alicia Sian



Performances by the Duck Egg Theatre Company & Baysgarth School

Carols by the Salvation Army

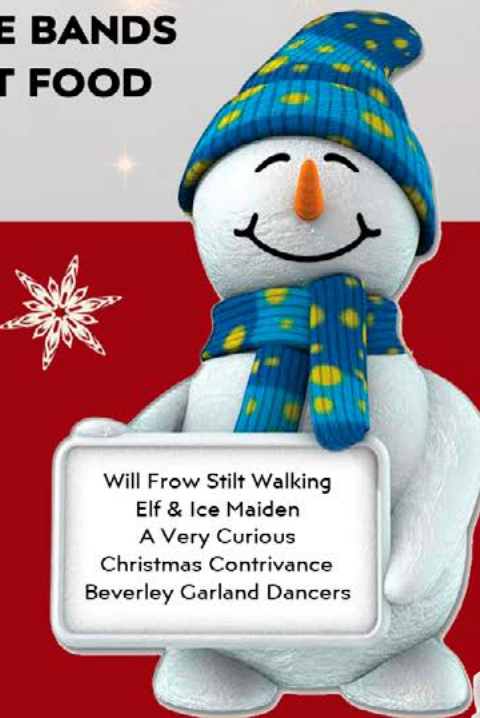
Live music from the Folklines Band, the Barton Community & Junior Band

Christmas Carols by Bowmandale Castledyke & St Peters C of E Primary Schools

Organised by Barton Upon Humber Town Council
T. 01652 633598
E. info@bartonuponhumbertowncouncil.gov.uk
W. www.bartontowncouncil.org.uk

**SATURDAY
NOVEMBER 25th
12-18:00
Light Switch On 17:30**

- TRADE STALLS
- STREET ENTERTAINMENT
- COMMUNITY STAGE ACTS
- CHRISTMAS CAROLS
- CHILDRENS RIDES
- LIVE BANDS
- HOT FOOD



Will Frow Stilt Walking
Elf & Ice Maiden
A Very Curious
Christmas Contrivance
Beverley Garland Dancers

Christmas

BARTON TOWN CENTRE



Roads Closed to vehicles



Trinity Church

- BARTON ROTARY CLUB SANTA
- SOFT TOY TOMBOLA
- CHRISTIAN CHRISTMAS CARDS
- ADVENT CALENDARS
- BLESSING BARS
- CHILDREN'S CRAFT ACTIVITIES AND REFRESHMENTS



DON'T MISS

Evangelical Church
Christmas Family Crafts
2 - 4pm

DON'T MISS

Wilderspin Craft Fair
12pm-4pm

TRADERS INCLUDE

- Linda Taylor Designs
- Jill Smith Animal Paintings
- Tim's Socks & Hats
- Shaney's Food
- Charming Gems
- Rainbow Rhino Laser
- Lincolnshire & Nottingham Air Ambulance Charity
- Fresh & Delicious Catering
- Heather's Purple Pantry
- Scunthorpe Samaritans
- Tiger Lily Scents
- Just Bake It
- Shadow Bridge Brewery
- Nettys Crafts
- Nurtured By Nature
- Brian's Balloon Magic
- Brads Food Truck
- Amnesty International UK (North Lines)
- World of Sausage & Belgium Chocolate Treats
- Wilson Confectionary
- K9 Catering Pet Supplies (S&J Trading)
- Madre Patata
- Barton Lions
- Wildlife Trust
- Kels Cupcakes
- Sweet Memories
- Homemade by Ru
- Buddys Bites
- Baked by Bex
- Kats Avon Delights
- Wrawby Methodist Church
- Honey Pot Café - Beardyman Cheesecakes
- Barton Town Junior Football Club - Tombola
- Patty's Pastries - home made cakes, pastries, teas and coffees
- CMC Creations



Barton St Peter's Toy Recycling Event

Have you got toys and games in the cupboard that have never been out of their packet or have only been played with once or twice?

As part of our Reduce, Reuse, Recycle drive we are holding a "Toy Swap" event.

Please send in any new/nearly new toys/games to the school office between Monday 30th October and Friday 24th November and then pop into St Mary's Church Hall between 10 and 12 on the 25th November (Christmas Festival Day) and find something new ... Maybe to add to your Christmas list!!

We will also have our uniform swaps available!

It's no secret that the licensed trade is suffering, writes Neil King..

Two Barton pubs reinvent themselves for a brighter future

Barton has lost many pubs in the last few years, including the Carnival, Coach and Horses and the Blue Bell. The national picture is, if anything, even more depressing. Thirty pubs are said to be closing EVERY DAY.



From January to March 2023 153 pubs have been demolished or redeveloped. During the whole of 2022, only 386 pubs were lost. Recent estimates suggest that the UK's food and beverage industry lost at least £25.66bn due to the Covid-19 pandemic.

So why should we care?

Well, as Samuel Johnson said in 1776 "There is nothing which has yet been contrived by man, by which so much happiness is produced as by a good tavern or inn." That may be laying it on a bit thick, but pubs have been at the heart of our communities for hundreds of years, and they're an integral part of the social infrastructure, particularly in rural towns and villages.

Think tank Localis agrees, citing the power of pubs to help build a sense of community cohesion. Localis argues that, for many people, visiting their local pub serves as an occasion to leave their house and socialise with neighbours and friends, helping prevent social isolation and loneliness. For this reason, the absence of rural pubs could jeopardise the social fabric of many communities, hindering interaction and local community initiatives. Pubs need to re-think how they operate, and Neil King has been talking to two establishments with similar ideas about how their futures could be more sustainable. Both businesses are adapting their offer to include diverse services for the wider community.

"There is nothing which has yet been contrived by man, by which so much happiness is produced as by a good tavern or inn."



manufacturer that was listed in White Swan Yard in a trade directory of that year.

The pub was still noted as a "commercial & posting house" in the 1920s, and advertised a motor garage and that the pub was the headquarters of the Royal Antediluvian Order of Buffaloes (it still is). Amongst other attractions in the 1920s was the White Swan Bowling Club, which met at the White Swan with George Henry Stocks as secretary. The club and the green remained until after the Second World War. The Barton Town Football team also used the Swan as their headquarters and consequently became known as the Swans.

Today, the Swan is known locally for its excellent craft ales, weekend brunches and good music. Still, given its history of hosting groups and activities, maybe we shouldn't be surprised to hear that the current licensee is working hard to re-invent the pub.

For example, did you know that they host a book club and you can learn to speak Spanish at the pub?

The book club has been running for more than eight years. Members come from all age groups and backgrounds and include a published author. The group reads an eclectic mix of books and meets outside of the club to attend book readings, poetry nights and meet-the-author sessions.

The Spanish collective meets to informally enjoy learning and speaking Spanish and exploring Spanish culture over a few beers - anyone is welcome to join in.

As well as hosting the Royal Antediluvian Order of Buffaloes (R.A.O.B) since the 1920s, the Swan is also home to the Rotary Club of Barton-Upon-Humber.

As well as hosting their meetings, the Swan also works with them to prepare the pensioners' Christmas tea party and cook the turkeys for the Christmas dinners that the Rotary Club provide for many people living on their own or who are unable to cook on Christmas Day due to their circumstances.

The Swan has also supported the Barton Lions by holding the annual Wobbley Wheelers event and raising money to support it.

These activities inspired the Swan's licensee, Lisa Robson, to introduce more community activities. She told Neil King "This winter, we are hoping to launch a campaign to bring light to the fact many people will be lonely or on their own, especially during the festive season." She added, "If we can bring people together at the pub to lift the loneliness and get other organisations involved, we might be able to play a part in relieving social isolation in Barton".

Lisa told me "The hospitality industry is one of the biggest in the country, from small cafes to large pub chains, and I would like to think if we all did a small bit to raise awareness of the loneliness facing some of our community, it would have an amazing impact."

Finally, Lisa has just launched a new initiative to solve an age-old Barton problem - what to do with the thousands of apples we scrape off our gardens yearly.

Lisa's solution is to start a community cider project. The idea is that we all donate our surplus windfall apples. Lisa and her team of



volunteers will press them, bottle the juice and store it while it ferments into cider. Later on, the Swan will host a Wassailing event where the contributors can literally enjoy the fruits of the team's labours. It's genius - an eco-project that turns into booze! Look out for posters advertising the project.

Lisa is currently planning several more projects and told me, "Watch this space there is so much scope for future events and bringing the community together, and we can't wait to get started."

The Corn Exchange

The Corn Exchange, a Grade II Listed Building in the Market Place, is a members club with a rich history, and it's in the process of reinventing itself for the future.

The club has a rich heritage and has constantly reinvented itself. Initially, the building housed a butter market and a corn exchange. The upper room was a reading room for the town's young men.

Alterations were made to the building in 1888 when the upstairs became the new home for the Barton Constitutional Club, known locally as the Conservative Club. The ground floor also found a new use as a Drill Hall. Billiard tables introduced by the club remained and were supplemented with snooker tables, a sport which remains an attraction at the premises today.

When it changed from the Barton Constitutional Club to the Corn Exchange Club it became a favoured venue for snooker, pool, darts and dominoes.

To find out what's going on now, you will need to get inside. Access is restricted because it's a private members club, but don't let that put you off! Simply use the intercom next to the front door. You will be greeted by a staff member or committee member who will be delighted to talk you through the membership process and show you around the club.

There are two newly refurbished lounge bars on the ground floor and an enormous games room with three snooker tables, a pool table, and two darts boards. Upstairs, the club boasts a function room with a bar. Non-members can hire the function room.

I spoke to Alvin Chapman about the Corn Exchange and he told me "The Corn Exchange has been around many years.

It's fair to say it had a reputation for being "stuck in the mud" - a bit old school!". He went

on "But that's all changed, and the club is developing a much more vibrant future. We've changed the décor, but that was only the start. The committee spent much effort tracking down some cracking new beers. We now offer a range of keg and cask-conditioned ales, alongside lagers, ciders and wines".

I asked what sort of activities take place at the club. Alvin told me "For us it's all about being an intrinsic part of the community. We want to be more than just a place to come for a drink." He added "We already act as a base for the Barton Community Band, which rehearses here twice a week, and we are the home of the Barton Lions. The club also hosts a Chess Club, Barton Allotment Society, Barton Wildfowlers, the local photography club and various football teams - part of our strategy is to increase this aspect of the club".

Alvin told me that the Corn Exchange also hosts christenings and funerals, as well as birthday parties and other celebrations.

"We want to become a hub for community groups and develop the range of activities available in Barton. If any groups would like an informal chat about that, we would urge them to contact us", he said.

My final question was "So, who is a typical member of the Corn Exchange?"

Alvin replied "We are very proud to say that as well as maintaining our traditional members, we are attracting people from across the age range. We have enjoyed a surge in membership applications recently. These include young people who want to use the games facilities and couples who want a friendly and safe environment for a night out."

Things might be very tricky for pubs at the moment, but the White Swan and the Corn Exchange are reinventing themselves and, in doing so, hope that, once again, pubs can be at the heart of our communities.

A new coach and new drivers for Radley

Radley & Appleby Coach Holidays of Barton upon Humber and Brigg has taken delivery of a brand new coach currently being built to its exacting touring specification.

During the recent difficult trading years of the pandemic the company began to think that a new coach would be something beyond its reach ever again.

However thanks to its customers' loyal support and willingness to travel once more Radley Travel feels confident in its investment and cannot wait to present its state of the art vehicle that features all the usual refinements expected to enable customers to enjoy their holiday in safety and comfort. Added to the specifications is a mini-kitchen for an on-board improved refreshment service, individual USB charging points close to each seat, which now come with a lateral movement as well

as a recline position to allow greater room relaxation. Built to the very latest standards the new coach is also future proofed for all intended upcoming coach travel legislation.

The company, that now incorporates Appleby Coach Holidays, has recently welcomed aboard Adam Mitchell and Christopher Pearson to its driving team! They have both recently passed their PSV driving tests on their first attempt!

Both men have been involved with the company for many years and while they currently have other full-time occupations, you may see them behind the wheel on a part-time basis in the coming years.

RADLEY APPLEBY'S Holidays

NEW TOUR FOR 2024

ABBA Voyage

ABBA ARENA LONDON

2 DAYS 1 NIGHT

Sunday 15th September 2024

ABBA VOYAGE 2024

Experience a concert like no other

ABBA have created the kind of concert they always wanted to perform for their fans at their very best as digital versions of themselves backed by today's finest musicians. Blurring the lines between the physical and digital, see the magic of ABBA brought to life using the latest in motion capture technology.

Staying at The Tower Hotel London on a bed & full English Breakfast basis.

£275 per person | Single Supplement £79 | Local Departure Points Only

Last few seats still available

Radley & Appleby Coach Holidays Ltd, The Travel Office, 11 Chapel Court, Brigg, North Lincolnshire, DN20 8JZ. T: 01652 653583. W: www.radleytravel.co.uk

Napoleons
CASINO · RESTAURANT · BAR
HULL

Christmas AT NAPOLEONS

LUNCH



DRINK* 3 COURSES* £5 BET*

THU & FRI

£30

DINNER



DRINK* 3 COURSES* £5 BET*

SUN - WED THU - SAT

£40 £45

NEW YEAR'S EVE



DRINK* 5 COURSES* £5 BET*

INCLUDES PROSECCO AT MIDNIGHT

£75

VIEW OUR FESTIVE
MENUS HERE



SCAN ME

WWW.NAPOLEONS-CASINOS.CO.UK/HULL

BeGambleAware.org 18+ *Ts and Cs apply.

BUY LOCAL: Great shopping and services on your doorstep!

SGKC Electrical Ltd

The move towards reducing our carbon footprint and increases in fuel prices has led more and more people to look at how they can reduce their energy consumption. One Barton company is leading the way locally with solar panel installations. Liz Bennet caught up with Shaun Cruickshank of SGKC Electrical Ltd.



Shaun's business is well established in the town and she asked why Barton?

Shaun was born in and grew up in Barton after his parents moved here from Burton upon Stather. He qualified in college after school then completed an apprentice with Corus in Scunthorpe before moving to Novartis after a few years. He came back to domestic and commercial electrics in 2013.

He set up on his own in September 2017 after the company he was working for folded, with the help and support from his then pregnant wife who was expecting their second child. With a lot of support from local people he knew Shaun was able to slowly build up his business and gain a good reputation within the town.

Shaun started with solar 10 years ago when it was big and booming. SGKC registered with regulator MCS in March 2022 as the energy price increase hit and solar became more popular again, after the company's assessment he advertised the service more, hoping to become the go to local company for solar and storage.

SGKC is mainly Shaun and Dean. Dean was Shaun's apprentice at his previous employer and he soon came over and started working for SGKC and has been with Shaun for nearly five years now on all the electrical jobs. Geoff, a friend for many years who set up at a similar time, works alongside Shaun on solar

installations and they've helped each other for the last five years on various projects. Liz asked how many Barton roofs he has tackled. Shaun estimated that there are approximately 25 with his installs on now around Barton and surrounding villages.

Why should people choose SGKC?

"We strive to provide a friendly professional service to all customers whether its solar or other electrical services. We aim to be competitive and all our works come with a two-year workmanship warranty as standard, but as a local chap

I would always pop out to any of my customers if they were having problems/issues. I've worked hard to gain the good reputation in the area and that is something I'm proud to say I've done.

"I believe we are a very trustworthy company and provide high quality in all our installs. We are a NAPIT registered company which proves our competency with annual assessments. More recently we have become MCS registered and carry the Trust Mark too, with full City and Guilds qualifications in all areas of electrical services we work within and also being apprentice trained too from college".

SGKC Electrical Ltd
Electrical & Renewable Services
Commercial & Domestic

ELECTRICAL AND SOLAR CONTRACTORS

- Electrical Services
- Test & Inspection
- Solar PV & Battery Storage
- EV Charging

TRUSTMARK MCS City & Guilds Qualified HIES NAPIT Registered Competent Person Electrical

07894 539017 www.sgkcelectrical.co.uk

Commemorating Ted Lewis at Barton Grammar School



A new exhibition has opened at the Ted Lewis Centre on Ferriby Road commemorating Ted's time as a scholar at the town's then Grammar School which opened in September 1931 but later morphed into Baysgarth School, in 1975.

Its most famous member of staff was **Henry Treece** (1911 - 1966) who was an incredibly talented and nationally respected poet, biographer of Dylan Thomas, novelist and musician who was Head of English from 1945 to 1959.

The following alumni of past pupils are:

- Jamie Cann** (1946 - 2001) M.P. for Ipswich
- Prof. A. John Camm** was Cardiologist, Honorary Physician to the late Queen Elizabeth II
- Reverend Monsignor Canon Jonathan Moore** became Canon Emeritus, Nottingham Cathedral Chapter

- Dr. A John Clark OBE FRSE** (1951 - 2004) was a molecular biologist who became Director of the Roslin Institute. His research resulted in the cloning of Dolly the Sheep, the first cloned large animal
- Peter D. Robinson** (b 1969) became Presiding Bishop of the United Episcopal Church of North America
- Edward Alfred (Ted) Lewis** (1940 - 1982) wrote nine novels, including Get Carter and played piano jazz in Unity Jazz Band. As a talented cartoonist and artist, he managed animation in The Beatles' Yellow Submarine.

The Ted Lewis Centre is always pleased to recognise re-unions of past pupils, no less the one held in October. Accordingly, Ted's time at the Grammar School in the 1950s is commemorated with permanent displays at the Centre, including original magazines, photos of Ted Lewis at school and play and a full-length photo of all the 1954 staff and pupils with names.

The displays will be open every Sunday until December 10, 2023. The Ted Lewis Centre encourages single and group visits all year round and this can be arranged by contacting us on www.tedlewiscentre.com

Check before you chop and change

A few questions for you.

- Can I chop a tree down in my garden in Barton without telling the Council?
- Can I install hard-standing for a vehicle at my home without permission?
- Can I replace my windows with anything I want?
- Can I put up a satellite dish facing the highway? Can I prune a tree without telling the Council?
- Can I put up a different front gate?

The answer to all these questions depending on where in the town you live, is NO!

If you live in the Conservation Area there are restrictions on what you can do without Planning Permission and/or Listed Building Consent, or in the case of tree work, notifying the Council of your intentions through

the same process. (Many reputable tree surgeons will do this for you as part of their quote).

If you live in the Article 4 area, basically the historic core of the town, then there are additional requirements. For those in listed buildings there are many more changes that require Listed Building Consent including internal alterations. It is an offence to alter a listed building without consent, but for all planned changes it is worth checking with the Council before you start. It can get expensive to reinstate things if you find out later that you should have asked for permission!

To help people understand the issues involved in the Conservation Area, Barton Civic Society is hosting an event on Friday, November 17 at 2pm in the Joseph Wright Hall on Queen

Street. We have brought together a panel of experts and people with experience of navigating planning regulations or who are custodians of Listed Buildings to discuss the joys and challenges of conservation.

For more than 50 years the Civic Society has tried to encourage a sense of civic pride and public interest in the good appearance of our town, its buildings and open spaces. So please do come along and find out how people are working to maintain Barton's unique historic character, and what can be done to conserve the town for all to enjoy. Further information is on our web site: www.bartoncivicsociety.co.uk

Neil Jacques
Chair Barton Civic Society

Looking in Holes: 40 years in Lincolnshire Archaeology

CPRE Northern Lincolnshire has invited the well-known local archaeologist, **Dr Kevin Leahy**, FSA, Mclfa, to give a talk on his 40 plus years of archaeology in Lincolnshire.

Dr Leahy worked for many years at the Scunthorpe Museum (now North Lincolnshire Museum) where he was instrumental in, amongst other things, the major excavation of the Flixborough Anglo Settlement.

Kevin, a small finds specialist, is now the National Finds Adviser for early-

medieval metalwork for the national Portable Antiquities Scheme, has a wealth of experience and knowledge of archaeology in Lincolnshire and has written many books on the subject.

The talk will be on Saturday, November, 11, at the Buttercross, Brigg, starting at 2pm.

Free admission for CPRE members, visitors £5. Tickets will be available on the door.

Refreshments will be provided.

Enquiries: Mary Allen; email: maryallen491@gmail.com Tel: 07977703623



Barton upon Humber Civic Society Lecture
www.bartoncivicsociety.co.uk



Safeguarding the Past – Shaping the Future

Friday 17 November at 2.00pm

Joseph Wright Hall, Wilderspin National School Museum
Queen Street [DN18 5QP].

Admission free for members/£4 for non-members

A History of Plough Jags

Plough-jag plays? What are they all about?

*“Good master and good mistress,
As you sit by the fire,
Remember us poor plough boys
Who travel through muck and mire.
The mire is so deep: we travel far and near
To wish you a happy and prosperous New Year.”*

Since the publication of “The English Folk-Play” in 1933, around 20 plays from Lincolnshire, 18 from Nottinghamshire, two from Leicestershire, and one from Rutland have been discovered. This prompts a re-evaluation of E. K. Chambers’ earlier assertion that these plays were predominantly found in Lincolnshire. Evidence from Yorkshire and East Anglia, as well as Nottinghamshire, now expands the geographical scope. The demarcation between Plough Monday plays and other festive traditions appears to be near the Nottinghamshire - Derbyshire border, which also marks the division between the upland and lowland regions of England - a distinction of historical significance.

Before delving into the specific distribution of these plays, it’s crucial, and now feasible, to establish clear definitions. Plough plays have traditionally been differentiated from Mummers’ plays not only by their association with Christmas, but also by the character names. Using this criterion, Chambers labelled one of the plays from Clayworth, printed by R. J. E. Tiddy, as a Mummers’ play primarily because it featured St. George. Tiddy, on the other hand, categorized it as a Plough Monday play, a judgment that appears more accurate. Several undisputed Mummers’ plays have been documented in Lincolnshire. Professor C. R. Baskerville published examples from Bassingham (1823), Broughton near Brigg (1824), and Swinderby (1842). A fragment of a play, which may have been performed in Caistor or Nettleton in the Lincolnshire Wolds, has

been published, as well as another from Mumby.

It’s beyond doubt that these are Christmas plays, and in most cases, the characters differ significantly from those in Plough plays. This distinction also applies to fragments of a play performed around 1880 at New Holland, recently collected by Mr. J. Martin; it includes, for instance, the character “Little Devil Doubt,” which is otherwise unknown in Lincolnshire. In Langwith, north-east of Lincoln, “Morris dancers” performed a Mummers’ play, while Plough Jags made their rounds on Plough Monday but did not enact any play. It seems that the tradition of performing at Christmas had, with a few exceptions, waned in the past century; no recent records of Mummers’ plays exist, and the case of New Holland can be attributed to outsiders who came to work on the railway there.

We are still asking for articles from anyone who has some knowledge of local history relating to Barton or one of the surrounding villages. We are happy to give assistance and advice on presentation for publication.

Examples of content:-

- Ancient customs of North Lincolnshire
- Mummers, Plough Jags and Morris Dancers.
- Bailiffs, Reeves, Villeins and Stewards. Their roles in the Manor.
- Transportation of convicts to Australia.

For any additional information, please contact pjc@proton.karoo.co.uk.

Barton and District History Group

Our group’s meeting on September 27 was extremely well attended with Nigel Land giving an excellent presentation of “Brian Peep’s Enduring Legacy”.

The Barton and District History Group will be holding its Annual General Meeting on November 29 at 7:30pm, in St Mary’s Church Hall on Burgate. All are invited to attend. Nomination forms for the Management Committee have been

circulated to members who will elect the Committee at this meeting. We are hoping to reveal our programme of speakers for 2024 and confirm the publication of “Heritage 6” our in-house magazine.

The last Humber Ferries



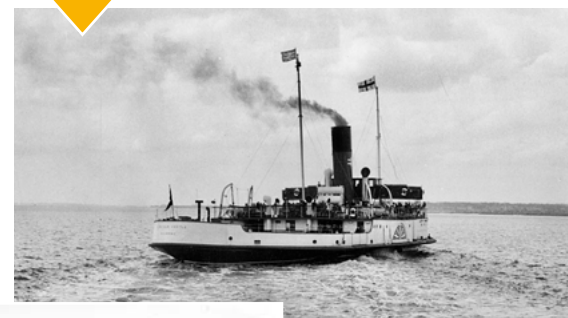
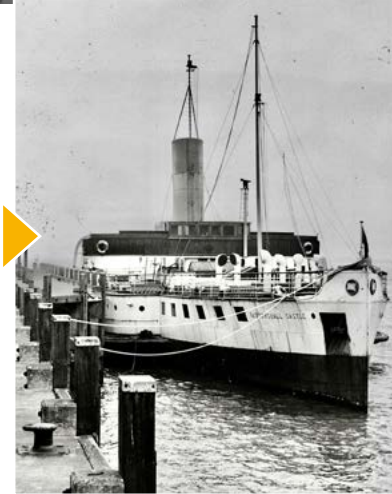
When the Humber Bridge opened in June 1981, the Hull to New Holland Ferry ceased to operate.



The Wingfield Castle paddle steamer and her sister ship Tattershall Castle were both built for the route and both launched in 1934, joining the PS Killingholme which had been in use since 1912.

Also launched in 1934, the Tattershall Castle.

The larger Lincoln Castle, introduced in 1941, heading towards Hull. She had a larger car deck, carrying 20 cars, and all three had a “Top Deck”, 1st Class saloon and, downstairs, the 3rd class saloon. They all also had a popular Licenced Buffet.



The engineer shows some visiting steam enthusiasts the workings of the engine room.

Tying the mooring ropes at New Holland Pier. This picture shows the “top deck” and, in the background, the captain on the bridge.



The Captain’s view from the bridge as the Wingfield Castle berths just behind the Lincoln Castle. This was sometimes a difficult manoeuvre in strong tides or winds.

Passengers boarding a ferry at New Holland in 1969.



The Yorkshire Belle from Bridlington, was brought to the Humber to provide a passenger service when the Farringford broke down just before the service finished.



Passengers arriving by train at New Holland Pier Station.

Workmen rushing to catch buses to a South bank construction project in 1969.



A bridge carries cars and passengers down to the floating pontoon ready to board the ferry. Hull Corporation Pier also had a pontoon, which rose and fell with the tides.



The Captain and Helmsman on the bridge. The two speaking tubes to the engine room are seen below the windows.



Impatient passengers climb over the sides before the gangway is lowered.



The former Isle of Wight ferry, the diesel powered Farringford, was brought to the Humber following the end of sailings by the three “Castles”, due to mechanical problems. She kept the service operating until the Humber Bridge opened. Here she is berthed at Hull Corporation Pier, loading cars.



Several “Steamboat Stamp” events were held by local Lions Clubs with this one organised by Brigg Round Table. A large number of “stompers” could be accommodated on the Lincoln Castle, where a Jazz Band on deck and a disco in the saloon entertained.

Photographed by David Lee Photography Celebrating

60 YEARS 1963 - 2023

Smith and Walker
(Optometrists) Ltd

Barton Immingham Winterton

01652 632315 01469 572702 01724 733754


Our Focus: Your Complete Eye Care
Enhanced Eye Examination Option with Optical Coherence Tomography (OCT)

When booking your eye examination you will be offered the option of our enhanced eye examination. We allocate more time to enhanced appointments allowing us to study your eyes in greater depth and to use OCT to facilitate the detection, diagnosis and monitoring of Glaucoma, Retinopathy, Macular Degeneration and many other retinal concerns. The enhanced examination addition can be arranged with both private and NHS based examinations.

If you have not received a reminder but have any concerns about your vision or need to arrange for new spectacles please telephone the practice for an appointment or advice.

High resolution 3D imaging

Detection *Retina Scan*
Diagnosis **Duo**
Monitoring



RNS Chartered Accountants

Struggling with your tax / VAT return?

Consult the experts on High Street.

Contact Us:
Barton - 01652 655111
41 High Street, Barton-Upon-Humber,
North Lincolnshire, DN18 5PD

Offices also at:
Scunthorpe - 01724 842713
50 - 54 Oswald Road, Scunthorpe,
North Lincolnshire, DN15 7PQ
Brigg - 01652 655111
The Poplars, Bridge Street, Brigg,
North Lincolnshire, DN20 8NQ



www.MSM-REFINISHERS.co.uk

MSM vehicle refinishers **Cromax**

setting the standards in professional perfection

★★★★★
5 STAR BODYSHOP

- Accident Insurance Repairs
- Paintwork
- Machine Polishing
- Customising & Colour Coding
- Alloy Wheels Refurbishment
- SMART Repairs

FREE QUOTES CALL US TODAY!
TELEPHONE 01724 733300
50 PARK STREET WINTERTON



SPIRE CARAVANS
...we buy Touring Caravans and Motor Homes

- From Nearly New to 25 Years Old
- Finance Cleared
- Discretion Assured
- Instant Payment
- Professional Local Service
- Out of Area Collections

Whether you're upgrading, down sizing or simply selling up and think you would benefit from a quick and easy sale ...call in confidence on:

01469 564 034
07984 246 098



HANDY MAN

- BASED IN BARTON
- NO JOB TOO SMALL
- FULLY INSURED
- FREE QUOTE

STEVE THE ODD JOB MAN
07796513339



Mason Baggott & Garton
SOLICITORS

Local Accessible Knowledgeable

Find Us

<p>Scunthorpe 13-19 Wells Street Call us on: 01724 868611</p> <p>Brigg 25 Bigby Street Call us on: 01652 654111</p>	<p>Epworth 1 Market Place Call us on: 01427 872661</p> <p>Barton upon Humber 90-92 High Street Call us on: 01652 247100</p>
---	---

www.lawlincs.co.uk

Generations of local people have used our services

RB

Rebecca Beaton
ACCOUNTANCY SERVICES

- Cloud Accounting
- Limited Companies
- Sole Traders • Payroll & CIS
- VAT, Corporation Tax & Self-assessment

Supporting Small Businesses

T: 01652 231931
E: hello@rbaccountancyservices.co.uk
www.rbaccountancyservices.co.uk

Waters Edge Business Centre
Barton upon Humber DN18 5JR **aat** AAT Licensed Accountant

rollerdoor uk GARAGE DOOR SPECIALISTS

<p>SECTIONAL DOOR Black, White & Anthracite* Fully Electric Control Panel 2x Transmitters* *Other colours are available for an extra charge</p> <p>FROM £1,400 Installed (Within A 50 Mile Radius)</p>	<p>UP & OVER VERTICAL OR HORIZONTAL Black, White & Anthracite* *Other colours are available for an extra charge</p> <p>FROM £695 Installed (Within A 50 Mile Radius)</p>	<p>55MM ELECTRIC ROLLER DOOR Control Panel, Safety Edge 2x Transmitters, White* *Other colours are available for an extra charge</p> <p>FROM £895 Installed (Within A 50 Mile Radius)</p>
--	--	---

Terms & Conditions Apply

Telephone: 01652 638149
Web: **www.rollerdooruk.com** Email: **rollerdooruk@gmail.com**

HORMANN **GARADOR** **TELECO** **somfy** **GLDEROL** **ELLARD** **DEPRAT** **novoferm**

JUST LEARN ADULT EDUCATION & COMMUNITY LEARNING

Skills for Jobs | Achieve Qualifications | Gain Confidence

Baysgarth Community Hub
Barton-upon-Humber
Tel: 01724 297146
northlincsadulteducation.co.uk

Tyers Accountancy
 Tax, accountancy, payroll, bookkeeping

- ✓ Friendly
- ✓ Local
- ✓ 25 years experience
- ✓ Covid-safe online meetings

Phone: **01469 533203**
 Email: enquiries@tyers-accountancy.co.uk
 Web: www.tyers-accountancy.co.uk
 Cally Lodge, Marsh Lane, New Holland, DN19 7PY

Crosshill House
 Residential Care Home

Crosshill House Residential Care Home provide **long term care, respite breaks & day care** for people over the age of 18.

If you would like to visit the care home to see the services on offer, please call in or telephone us.
Telephone 01469 531767
 You can also visit our website for further information
www.crosshillhouse.co.uk

Time to Care - Time to Share

Crosshill House Residential Care Home
 Market Square, Barrow upon Humber, North Lincolnshire, DN19 7BW

Remembering loved ones in Barton

A memorial Christmas tree has been erected at H & HJ Huteson & Sons Funeral Directors in Barton Upon Humber to help the community remember loved ones.

Kevin Gravill Electrician

Barton upon Humber
07864 852586

All Electrical work carried out
 Call, Text, WhatsApp for free quotation
 Sockets, Lights, Consumer units, Repairs and More

- ✓ Local Tradesman
- ✓ Reliable
- ✓ Polite
- ✓ Professional
- ✓ Fully Insured
- ✓ Clean & Tidy
- ✓ NICEIC Registered

Serving all around Barton, Barrow, Goxhill, Sth Ferryby, Low Villages and more

RNS Independent Financial Advisers

Wondering about pensions and investments?

Book your **FREE** High Street consultation.

20 YEARS Est. 2000

Contact Us:
Barton - 01652 655111
 41 High Street, Barton-Upon-Humber, North Lincolnshire, DN18 5PD

Offices also at:
Scunthorpe - 01724 842713
 50 - 54 Oswald Road, Scunthorpe, North Lincolnshire, DN15 7PQ
Brigg - 01652 655111
 The Poplars, Bridge Street, Brigg, North Lincolnshire, DN20 8NQ

www.rns-ifa.co.uk

J.S. Machin
 Funeral Director

AN INDEPENDENT FAMILY FIRM
 (EST. OVER 60 YEARS)

Private Chapel of Rest
 24 Hour Personal Service
 Pre-Paid Funeral Plans

Traditional Funerals from £2700
 Contact for a Competitive Quote

Tel: 01652 632205
 Email: MachinFunerals@gmail.com

1 Brigg Road
 Barton upon Humber
 DN18 5DH

JASON THREADGOLD
 FUNERAL DIRECTOR

SCUNTHORPE 865865 - BARTON 661100
 BRIGG 638888

OUR REPUTATION FOR DELIVERING A PROFESSIONAL AND PERSONAL SERVICE OF THE HIGHEST QUALITY IS BUILT ON TRUST AND RECOMMENDATION

CARING FOR YOU AND YOUR LOVED ONES

Jason Threadgold Funeral Director is **INDEPENDENTLY** owned and run by local husband and wife team Nichola and Jason Threadgold

IF YOU ARE NOT HAPPY WITH YOUR CURRENT FUNERAL PLAN PROVIDER COME IN AND TALK TO US FOR FREE ADVICE OR HELP TO TRANSFER TO ONE OF OUR TRUSTED PERFECT CHOICE FUNERAL PLANS.

Contact us for 24 hour personal attention
 19-21 Old Courts Rd, Brigg, DN20 8JD
01652 638888
 27 King Street, Barton Upon Humber, DN18 5ER
01652 661100
 3 Burringham Road, Scunthorpe, DN17 2BA
01724 865865

PROUD TO BE SERVING THE COMMUNITY

Ecclesiastical PLANNING SERVICES
 Farnborough 2022 **BIZX** Runner up 2022 for Best Customer Service
 Finalist for 2022 Best Customer Service

The special tree serves as a symbol of remembrance and reflection, offering solace over the Christmas period for those who have experienced loss.

Families supported by the team at H & HJ Huteson & Sons as well as members of the wider community are warmly invited to dedicate a personalised star to their loved ones. These stars will be hung on the community memorial tree as a sign of remembrance and will be provided by our team and we are more than happy to inscribe a name on the memorial Christmas tree on behalf of anyone. Please contact our branch directly.

We know that this time of year can be particularly challenging for those who have experienced a loss and we want to remind people that they are not alone.

We are also opening our doors all day on Saturday, November 25, in conjunction with the Barton Town Council Christmas Festival and Christmas tree light switch-on event. Refreshments will be available and our team on hand to chat.

For further details please contact H & HJ Huteson & Sons, Holydyke Funeral Home, Barton Upon Humber, DN18 5PR. Telephone: 01652 660 330

Disclaimer: All information was correct at the time of going to print 3 November 2023.

Greensleeves
 Celebrating 25 Years

WE'LL HELP YOU GET THE LAWN OF YOUR DREAMS

Get in touch to speak to one of our dedicated experts for a FREE lawn consultation

01652 656455
07515 375980
 lincolnshirenorth@greensleeves-uk.com

Excellent Trustpilot

BARTON Buy Local

What you can't find here, you don't need!

BARTON WARD

Councillor Keith Vickers 07484325102
 Councillor Paul Vickers 07515671546
 Councillor Chris Patterson 07511674821

Serving you on North Lincolnshire Council
 If you have a council related problem, then telephone or email us on any of the above numbers.

Martin Vickers
 Member of Parliament for the Cleethorpes Constituency

Martin holds regular surgeries across the Constituency including Barton, Immingham & Cleethorpes and is available to discuss any issues that you may need help or advice with.

If you would like to make an appointment to discuss your query with Martin please contact

Tel: 01469 572777
 Email: mvickersmp@parliament.uk
 Please note: meetings are by appointment only.

Providing expert legal advice in Lincolnshire and surrounding areas

BG Solicitors are here for you.

How can we help?

We believe that each client is equally important and pride ourselves on our local knowledge and sound business sense

Care Proceedings|Civil Mediation|Commercial/Property Law|Debt Recovery|Dispute Resolution|Employment Law|Estate & Property Development|Family Law
 Family Mediation|Landlord & Tenant|Legal Aid|Medical Negligence|Moving Home|Personal Injury|Wills - Trusts - Probate

3 - 4 Market Place, Barton upon Humber, North Lincolnshire. DN18 5DD. 01652 632215. www.bgsolicitors.com

BG Solicitors LLP

GRIMSBY 01472 240251	SCUNTHORPE 01724 847888	LOUTH 01507 600610	HESSLE 01482 212077
--------------------------------	-----------------------------------	------------------------------	-------------------------------



MD SIGNS
the sign and design specialists

- Design
- Print
- Manufacture
- Install



sales@md-signs.co.uk

01652 634265

www.md-signs.co.uk

Unit 5, Falkland Way, Barton, DN18 5RL



Silver Birch Blinds
Fashionable windows at affordable prices

- Vertical
- Venetian
- Roller
- Wooden
- Pleated
- Roman
- Perfect Fit

Office:
Waterside Road
Barton upon
Humber
DN18 5BA

01652 632509
www.silverbirchblinds.co.uk

**NO GIMMICKS
JUST GENUINE
LOW PRICES
THROUGHOUT
OUR ENTIRE RANGE**

We are a local family firm offering a fast and friendly service

euronics the home of electricals **Laundry appliances**
from your local independent electrical retailer



Price Match Guarantee* | Professional Installation | Expert Knowledge | Contact-Free Delivery



Lindsey Relay Co Ltd

17 George Street, Barton-upon-Humber, DN18 5ES
01652 632715 | lindseyrelay.com



*Terms and Conditions apply. Sold as an agent of Euronics Limited. All rights reserved. All offers are subject to availability while stocks last. Delivery & Installation charges may apply Exclusions and Radius Apply. See in store for full details. Images for illustration purposes only. Copyright Euronics 2023. E&OE 2023.